

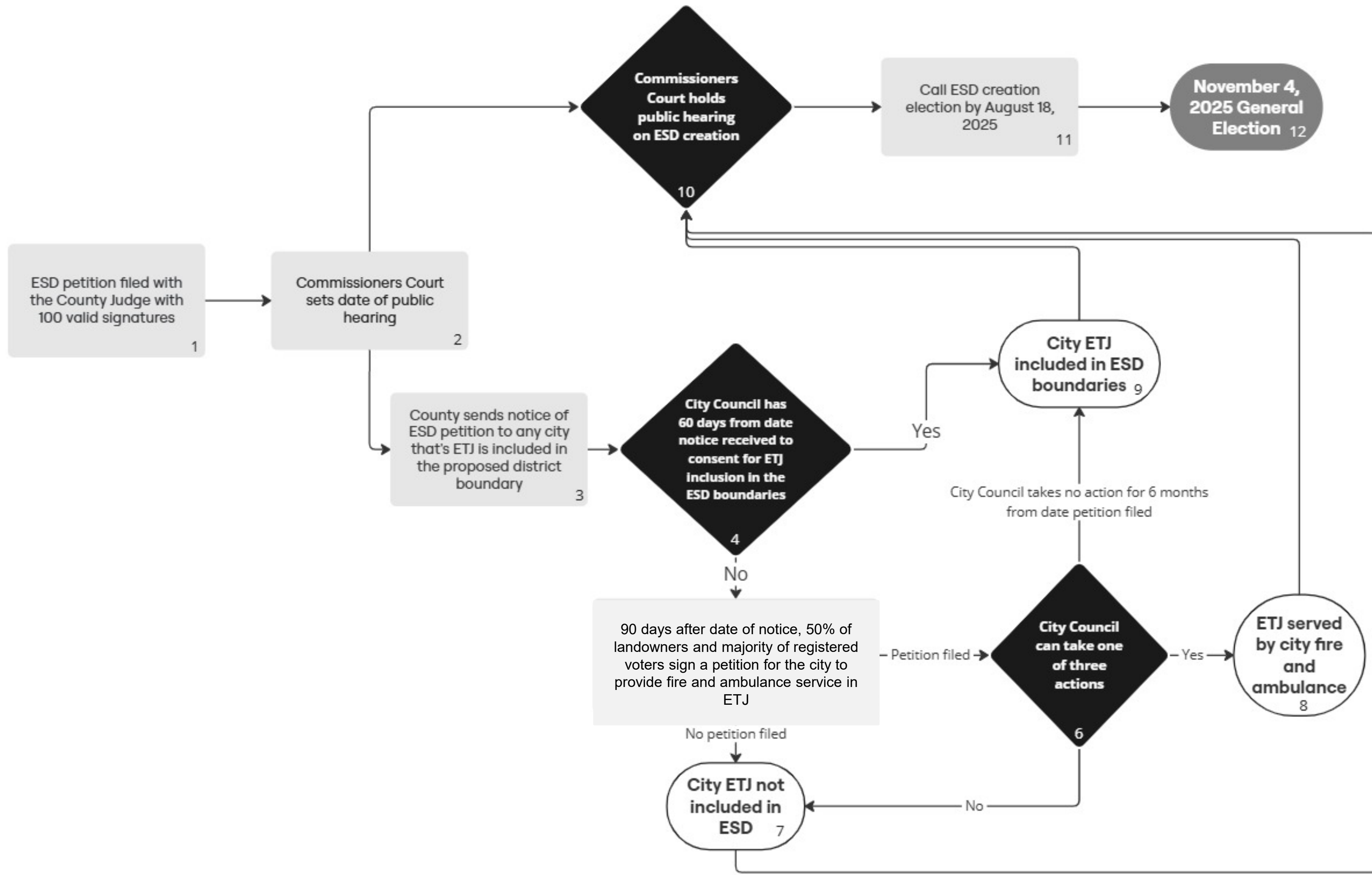


Collin County ESD 1 Public Hearing Presentation

July 28, 2025



Review of the Timeline



Commissioners Court Actions

- **Conduct public hearing**
- **Set the boundaries of the ESD 1 based on ETJ consent**
- **Determine if the ESD 1 will still promote the public safety, welfare, health, and convenience of the persons residing in the proposed district**

Commissioners Court Actions

- **Call an election to confirm the creation of the Collin County ESD 1**
- **Set the date of election**
- **Establish the ballot language – authorize the creation of the district and authorize the imposition of a tax not to exceed the rate allowed by Section 48-e, Art. III, Texas Constitution.**

Cities consenting to their ETJ being included in the ESD 1:

Blue Ridge

Celina

Farmersville

Fate

Josephine

Lavon

Lowry Crossing

McKinney

Melissa

~~Melissa~~

Murphy

Nevada

New Hope*

Parker

Princeton

Prosper

Royse City

Weston

Wylie

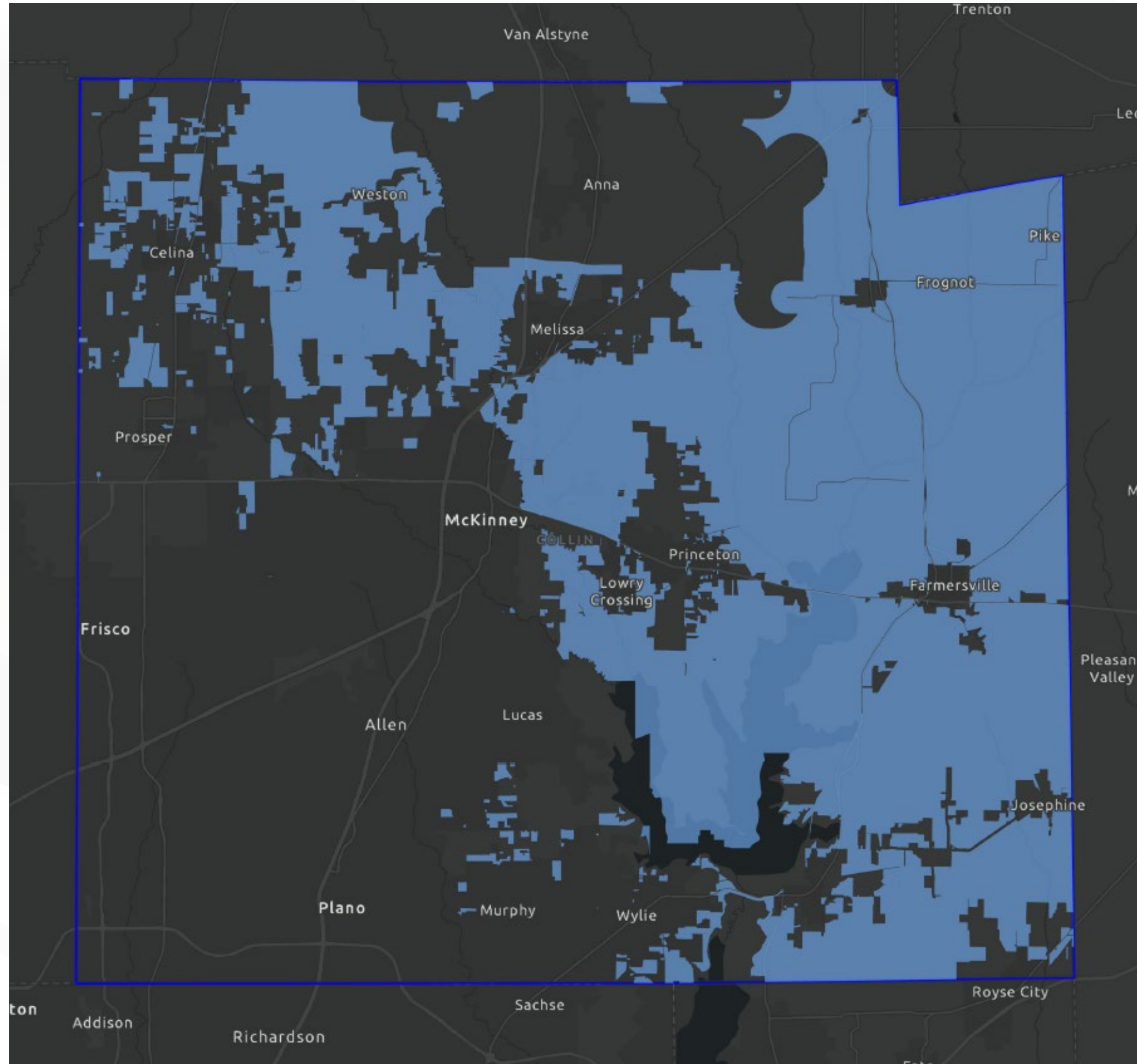
*Includes city limits



Cities NOT consenting to their ETJ being included in the ESD 1:

Allen
Anna
Fairview
Frisco
Garland
Hebron
Lucas
Plano (N/A)
St. Paul
Trenton
Van Alstyne

Updated ESD 1 Map





ESD Tax Revenue

***June 2025 Estimate**

	2025 Taxable Value	\$0.05 Rate*	\$0.10 Rate*
Total Taxable Value	\$ 18,416,770,176	\$ 8,287,546	\$ 16,575,093
Taxable Value of Districts (MUDs)	\$ 7,775,904,319	\$ 3,499,156	\$ 6,998,313
Net Value	\$ <u>10,640,865,857</u>	\$ <u>4,788,389</u>	\$ <u>9,576,779</u>

*Staff recommends a conservative estimate of 90% of the total taxable value and this is reflected in the values.

Commissioners Court Actions

- **Conduct public hearing**
- **Set the boundaries of the ESD 1 based on ETJ consent**
- **Determine if the ESD 1 will still promote the public safety, welfare, health, and convenience of the persons residing in the proposed district**

Commissioners Court Actions

- **Call an election to confirm the creation of the Collin County ESD 1**
- **Set the date of election**
- **Establish the ballot language – authorize the creation of the district and authorize the imposition of a tax not to exceed the rate allowed by Section 48-e, Art. III, Texas Constitution.**



Questions?

